

Appendix A – Exhibits Presented at Public Hearing held on May 28, 2020

Fort Bend Subsidence District Presentation

Fort Bend Subsidence District

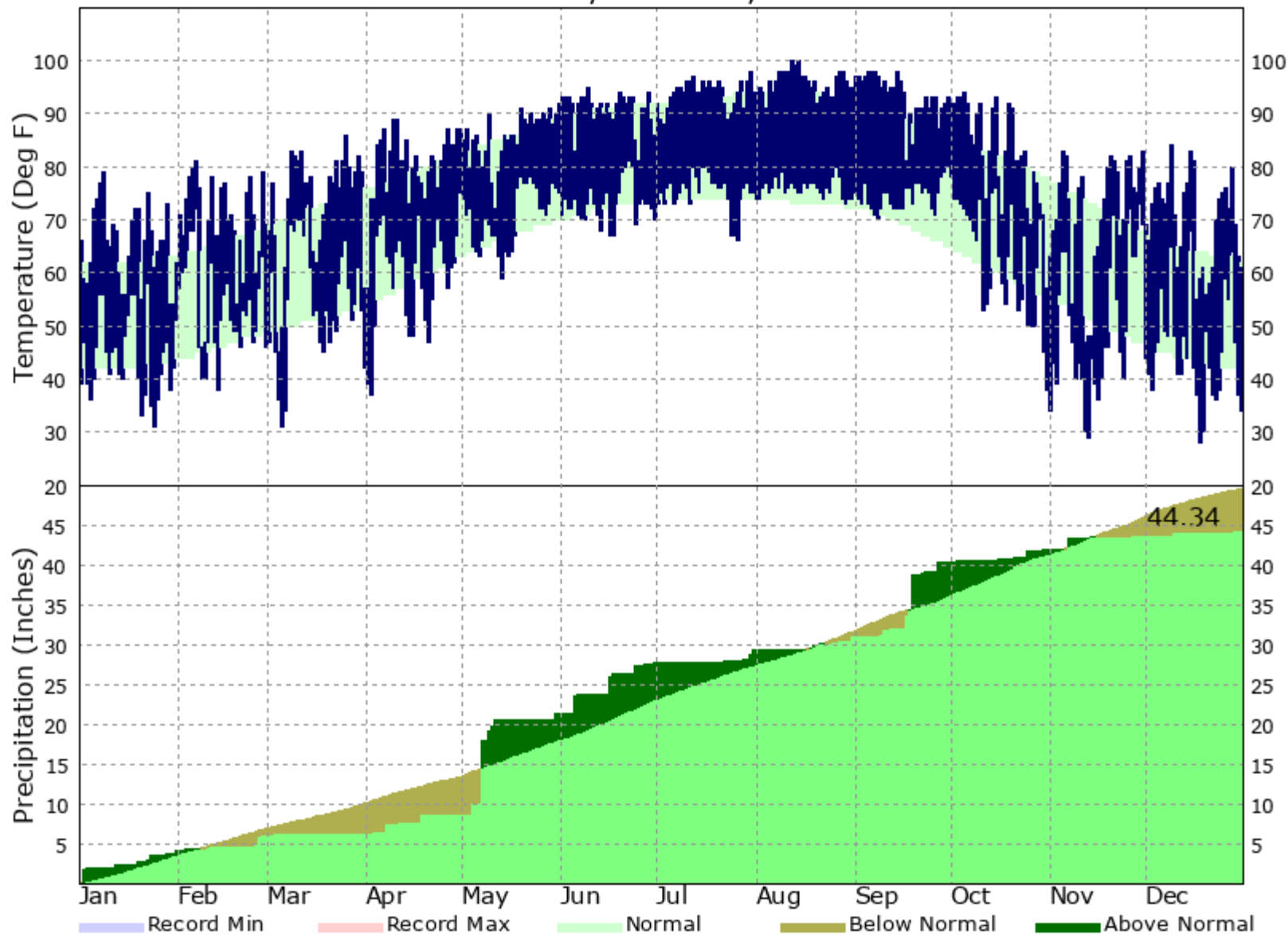



2019 Annual Groundwater Report



www.fbsubsidence.org

SUGARLAND/HULL FLD, TX - 2019

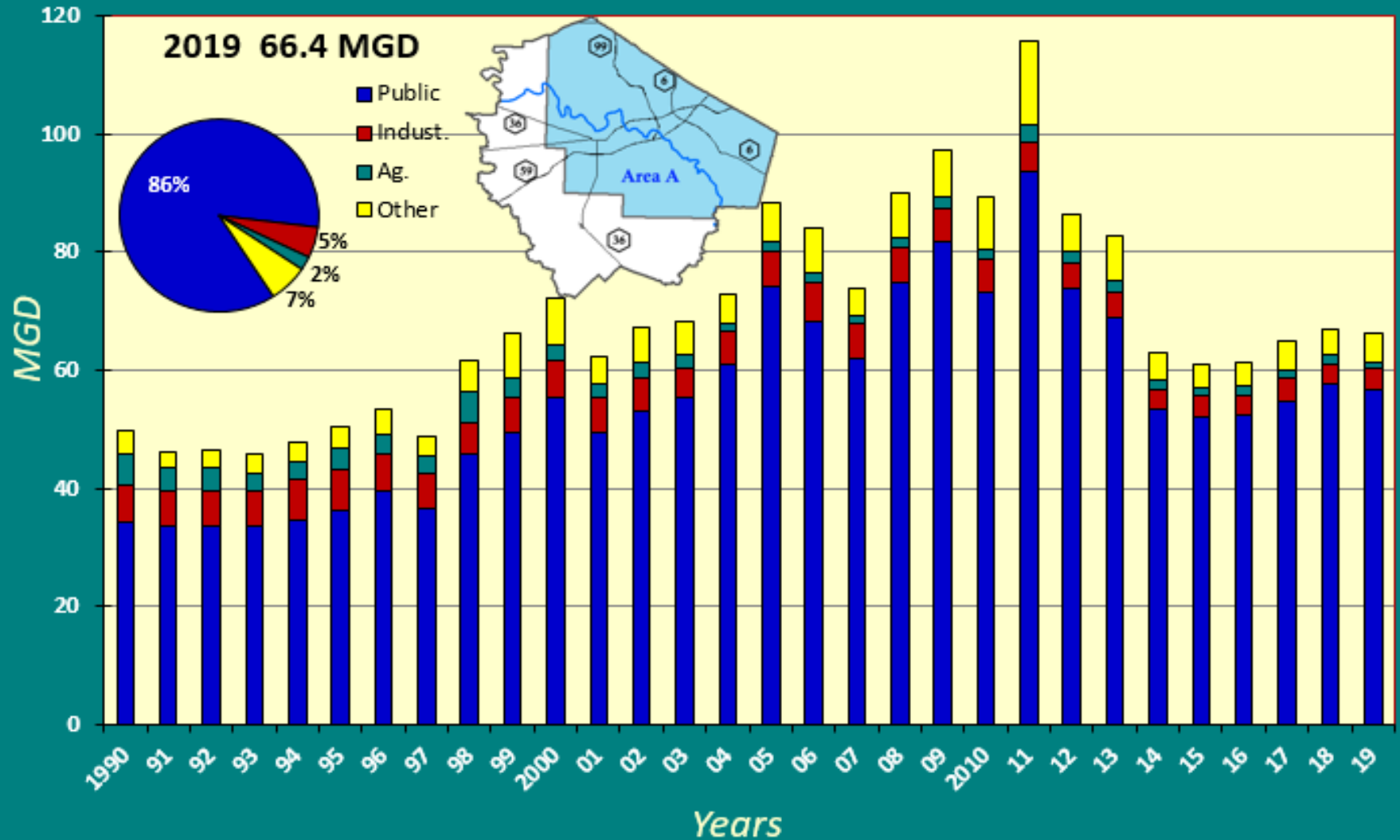


A photograph of an irrigation system in operation on a lush green field. Multiple sprinklers are visible, each spraying water in a wide, fan-like pattern. The background consists of a dense line of dark green trees. The entire image is set against a solid teal background.

Weather
Pumpage
Water Levels
Subsidence

Groundwater Withdrawals

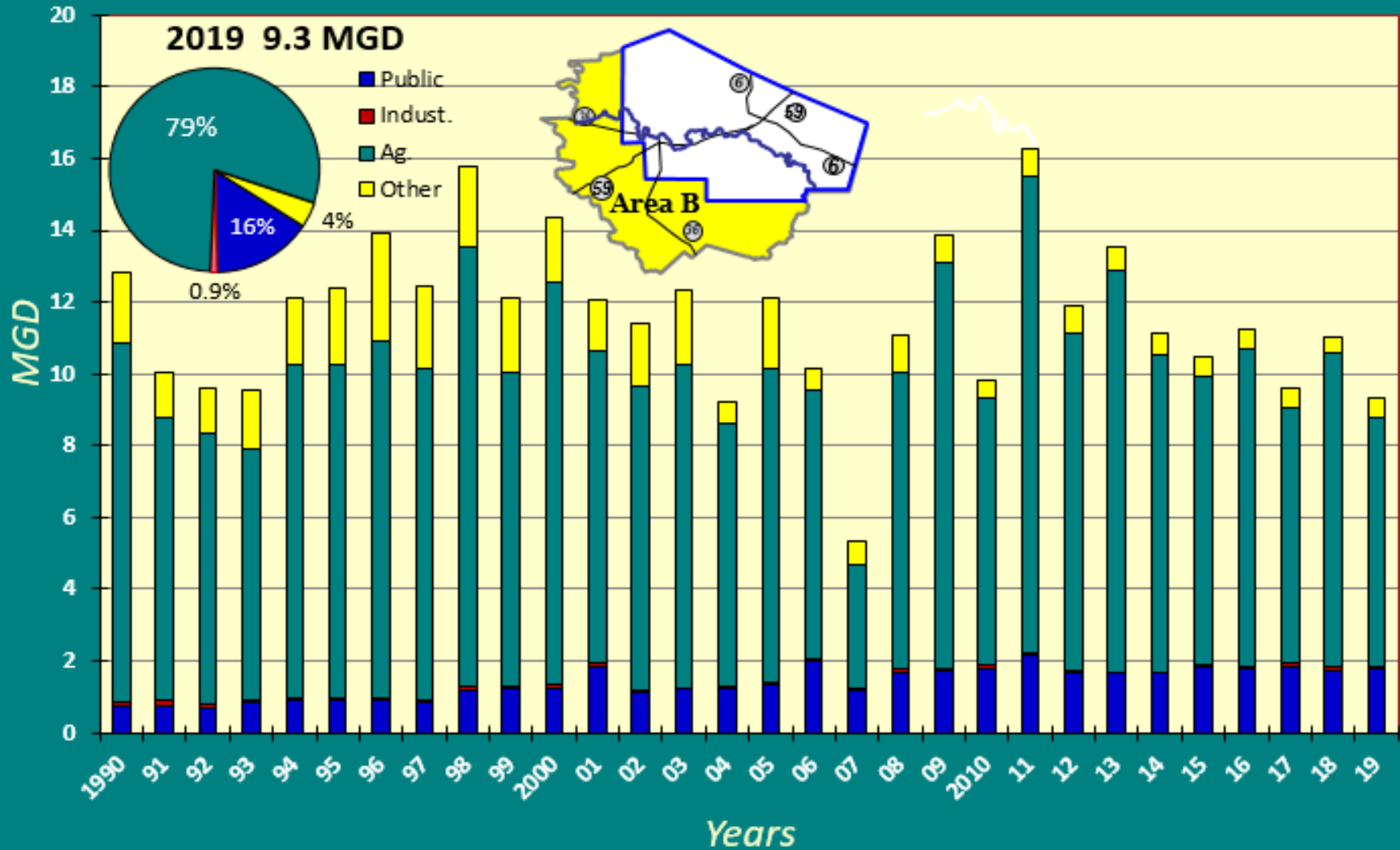
Grouped by Use - Regulatory Area A





Groundwater Withdrawals

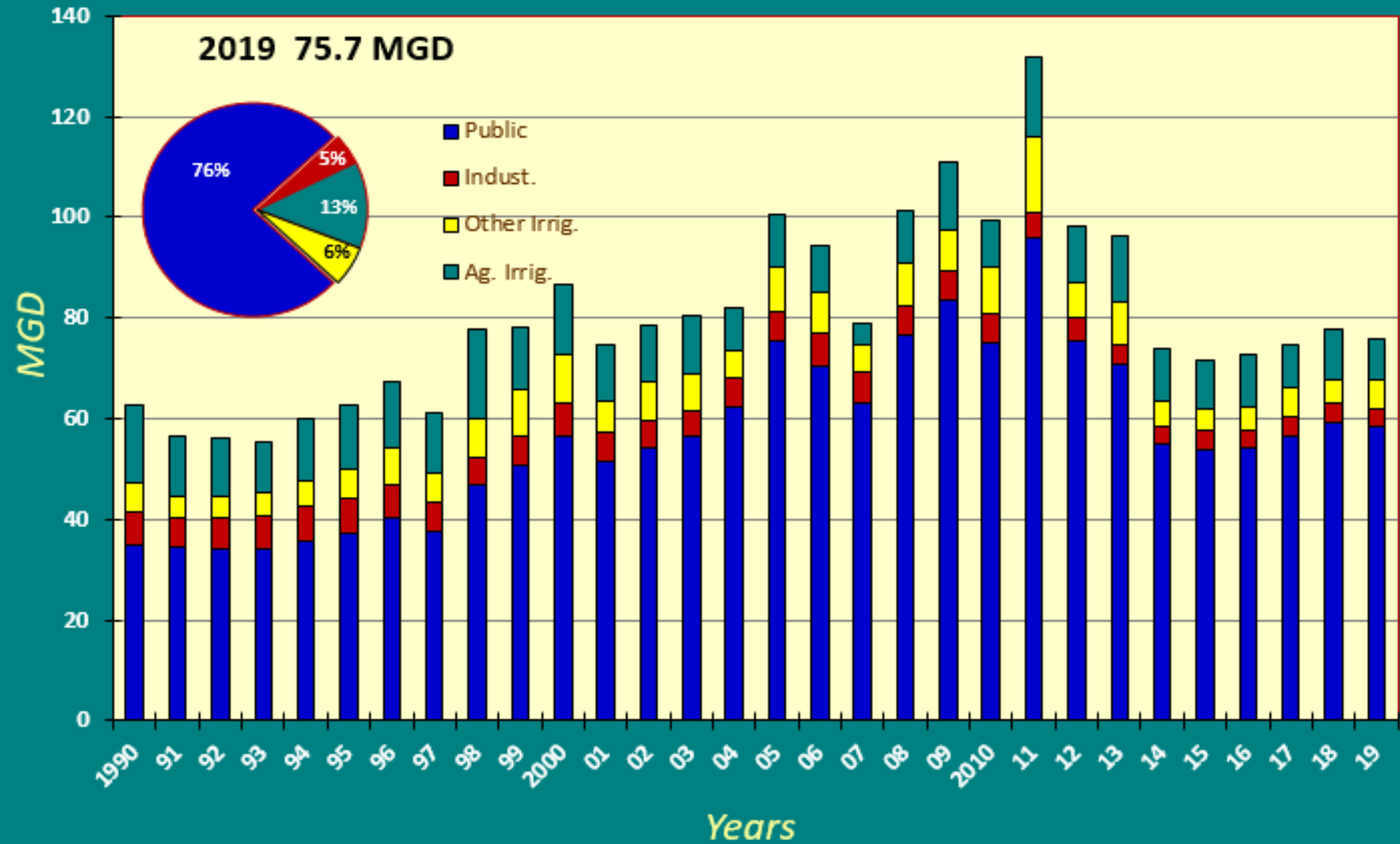
Grouped by Use - Regulatory Area B





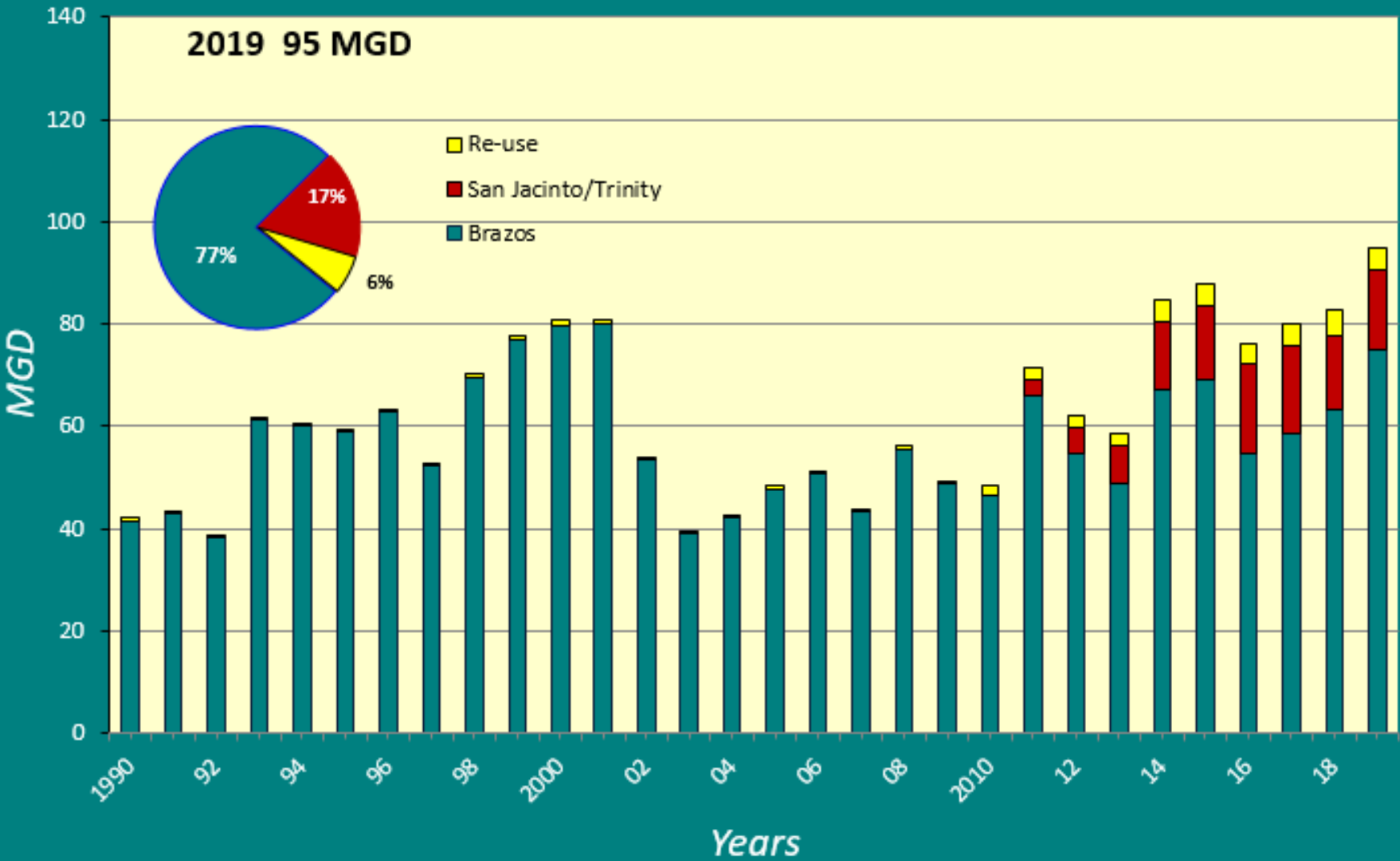
Groundwater Withdrawals

Grouped By Use - Entire District



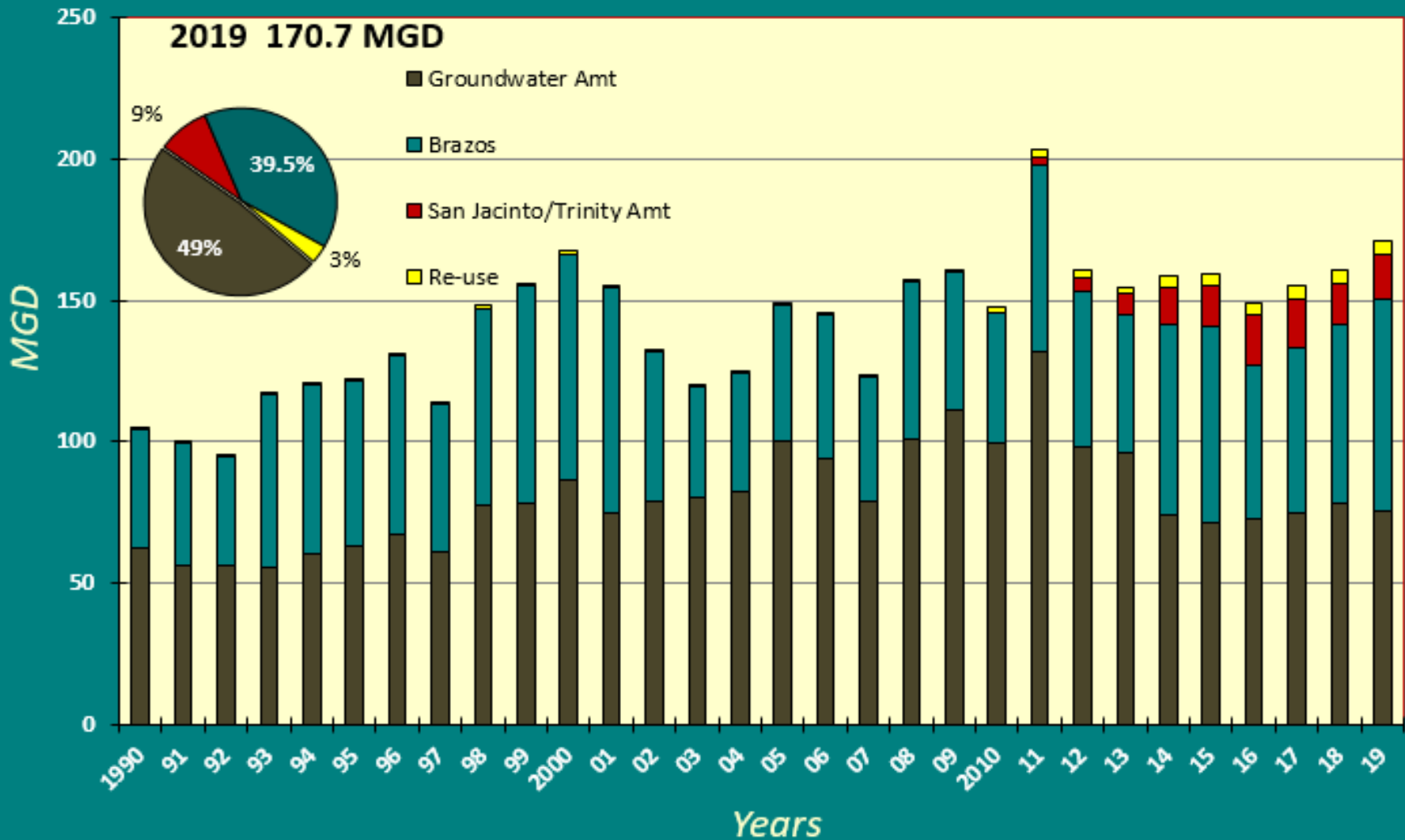
Surface & Re-Use Water Utilized

Grouped By Source - Entire District



Total Water Demand

Grouped By Source - Entire District



Groundwater-level altitudes and changes in the Chicot, Evangeline, and Jasper Aquifers (2020) and compaction in the Chicot and Evangeline Aquifers (1973-2019)

For the Houston-Galveston Region, Texas



Pumping well
turbine,
Montgomery
County, Texas

Jason Ramage |

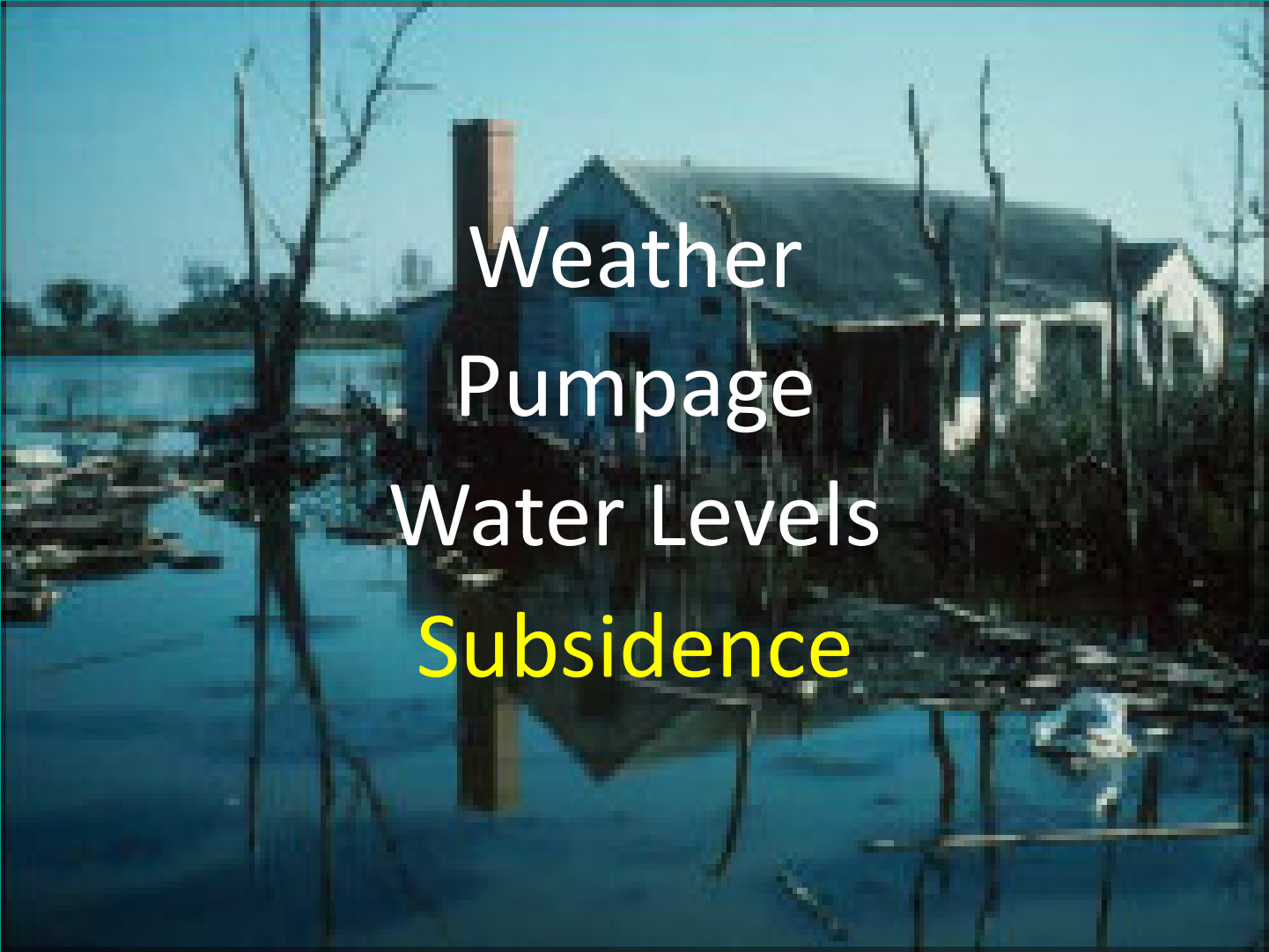
jkramage@usgs.gov

USGS Oklahoma-Texas Water
Science Center
Hydrologist

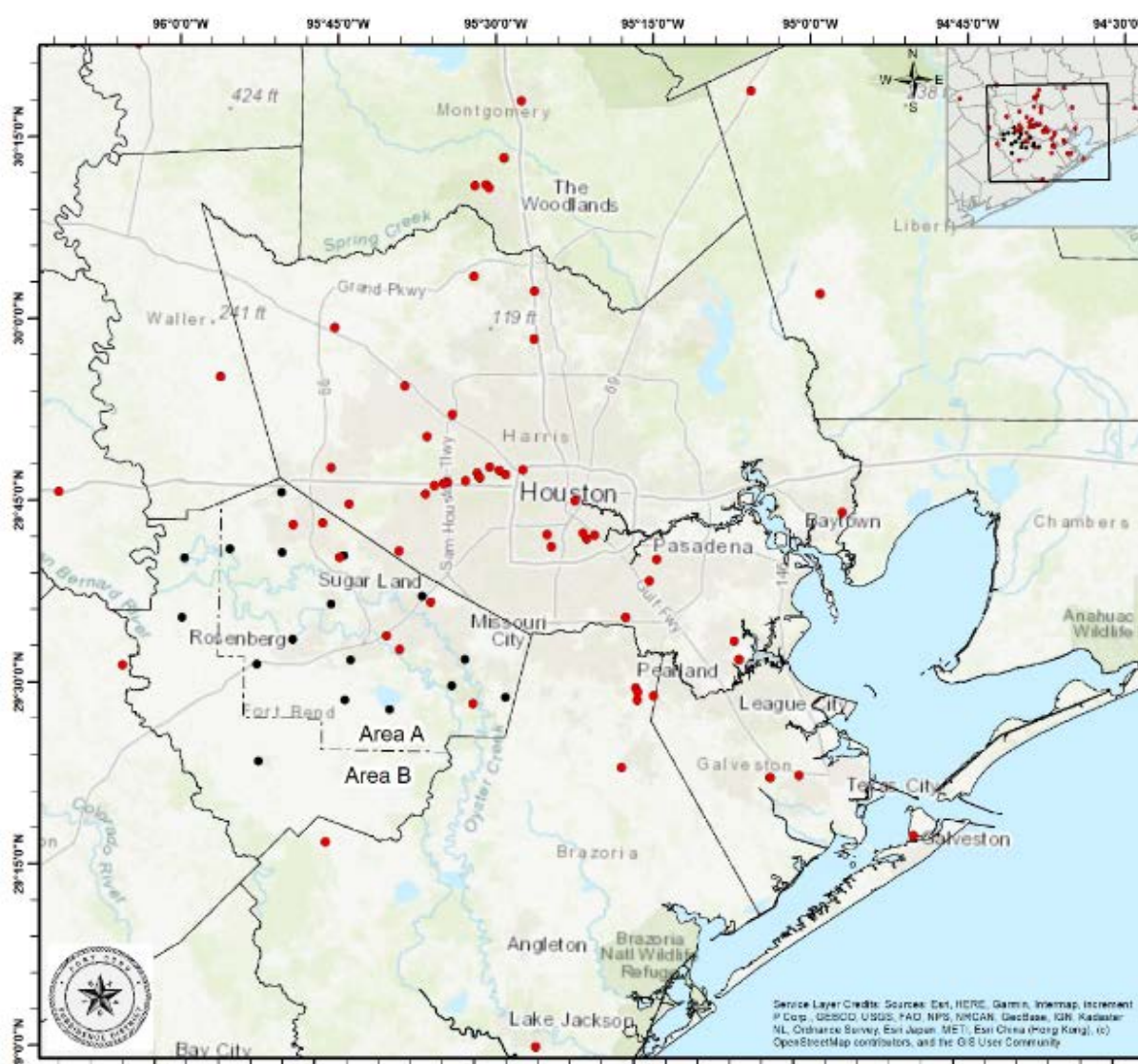
Chris Braun |

clbraun@usgs.gov

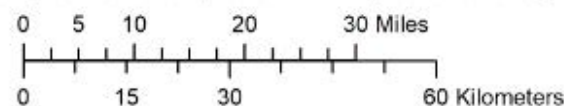
USGS Oklahoma-Texas Water
Science Center
Hydrologist | Groundwater
Specialist



Weather
Pumpage
Water Levels
Subsidence



Base from Harris-Galveston Subsidence District Digital Data, 1:100,000
 Universal Transverse Mercator projection, zone 15
 North-American Datum of 1983

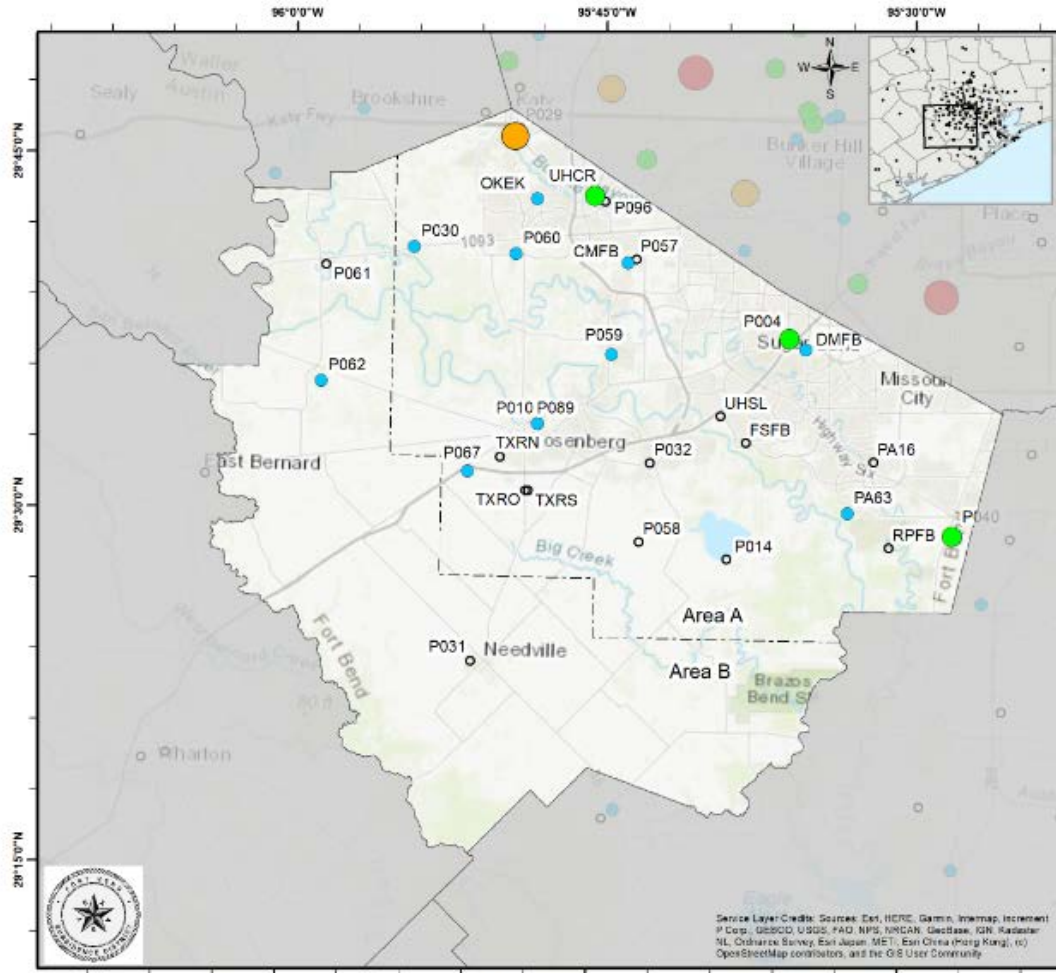


EXPLANATION

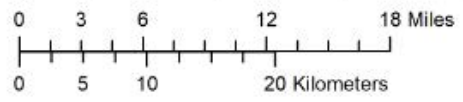
GPS Monitoring Site Operator

- University of Houston
- Fort Bend Subsidence District

Location of periodic and continuous GPS monitoring sites operated by the University of Houston and Fort Bend Subsidence District in Harris, Fort Bend and Surrounding Counties, Texas, 2019.



Base from Harris-Galveston Subsidence District Digital Data, 1:100,000
 Universal Transverse Mercator projection, zone 15
 North-American Datum of 1983



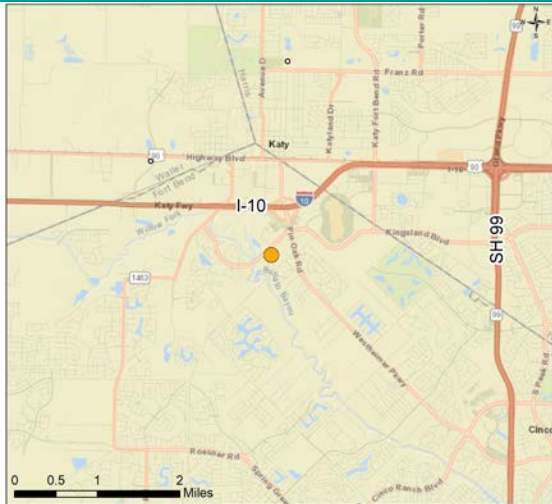
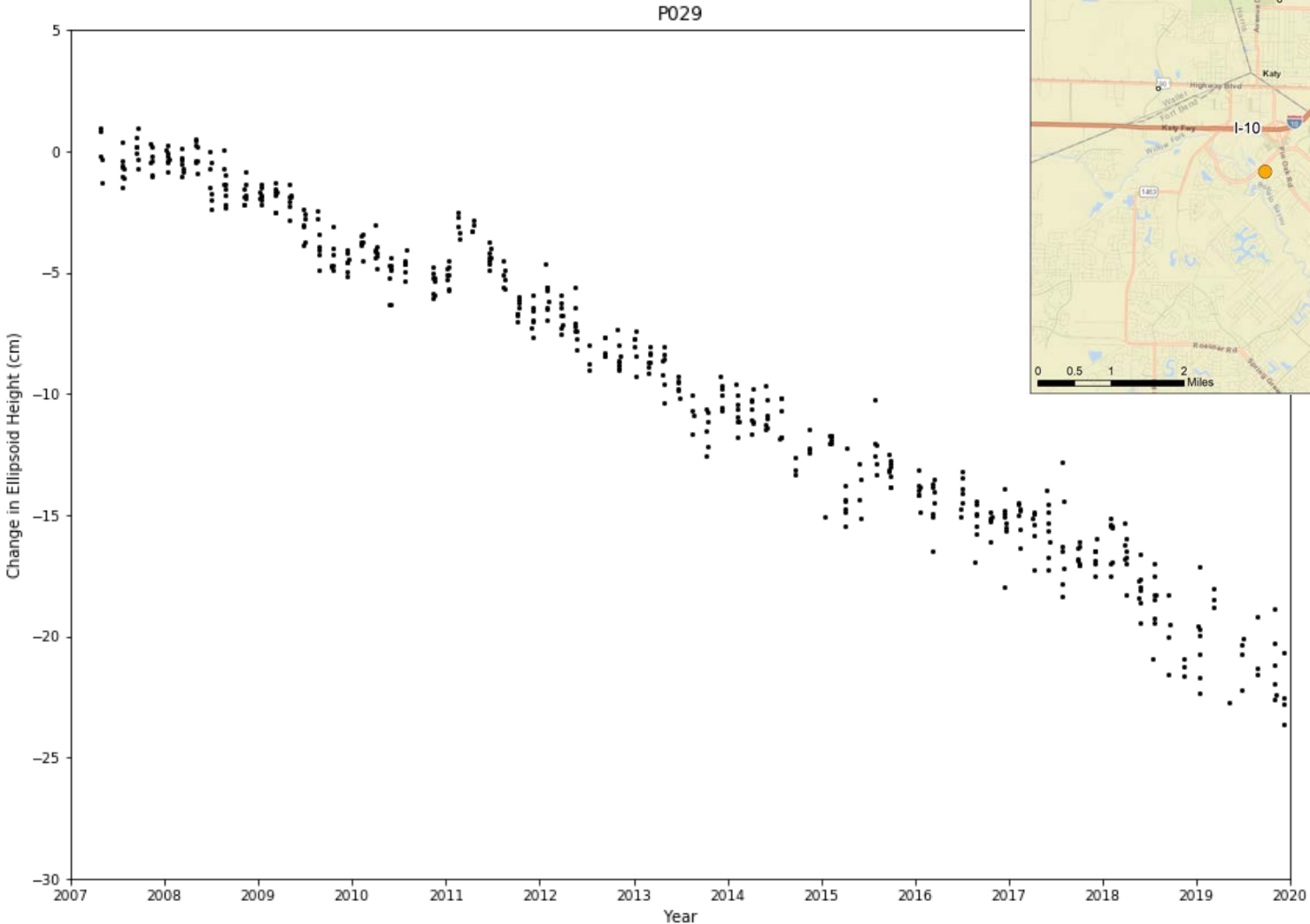
EXPLANATION

Subsidence Rate (cm/yr) from 2015 to 2019

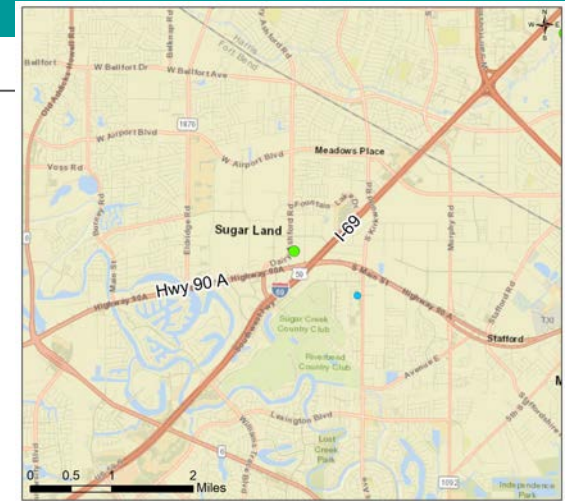
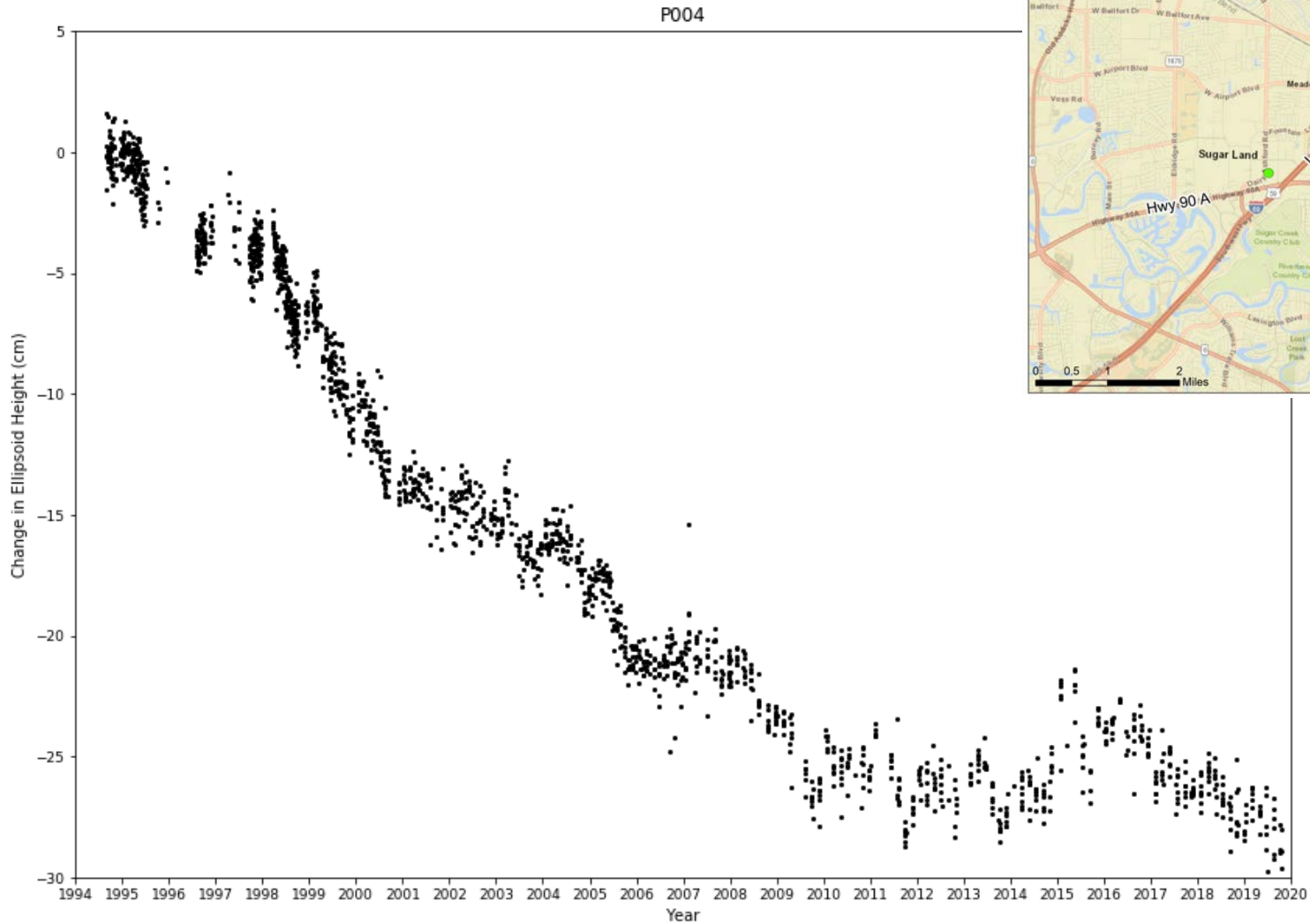
- Greater than 2.0
- 1.9 - 1.5
- 1.4 - 1.0
- 0.9 - 0.5
- Less than 0.5 or period of record less than 3 years

Annual subsidence rate, in centimeters per year, estimated from periodic and continuous GPS data measured at GPS monitoring sites in Fort Bend and Surrounding Counties, Texas, 2015-2019.

Katy

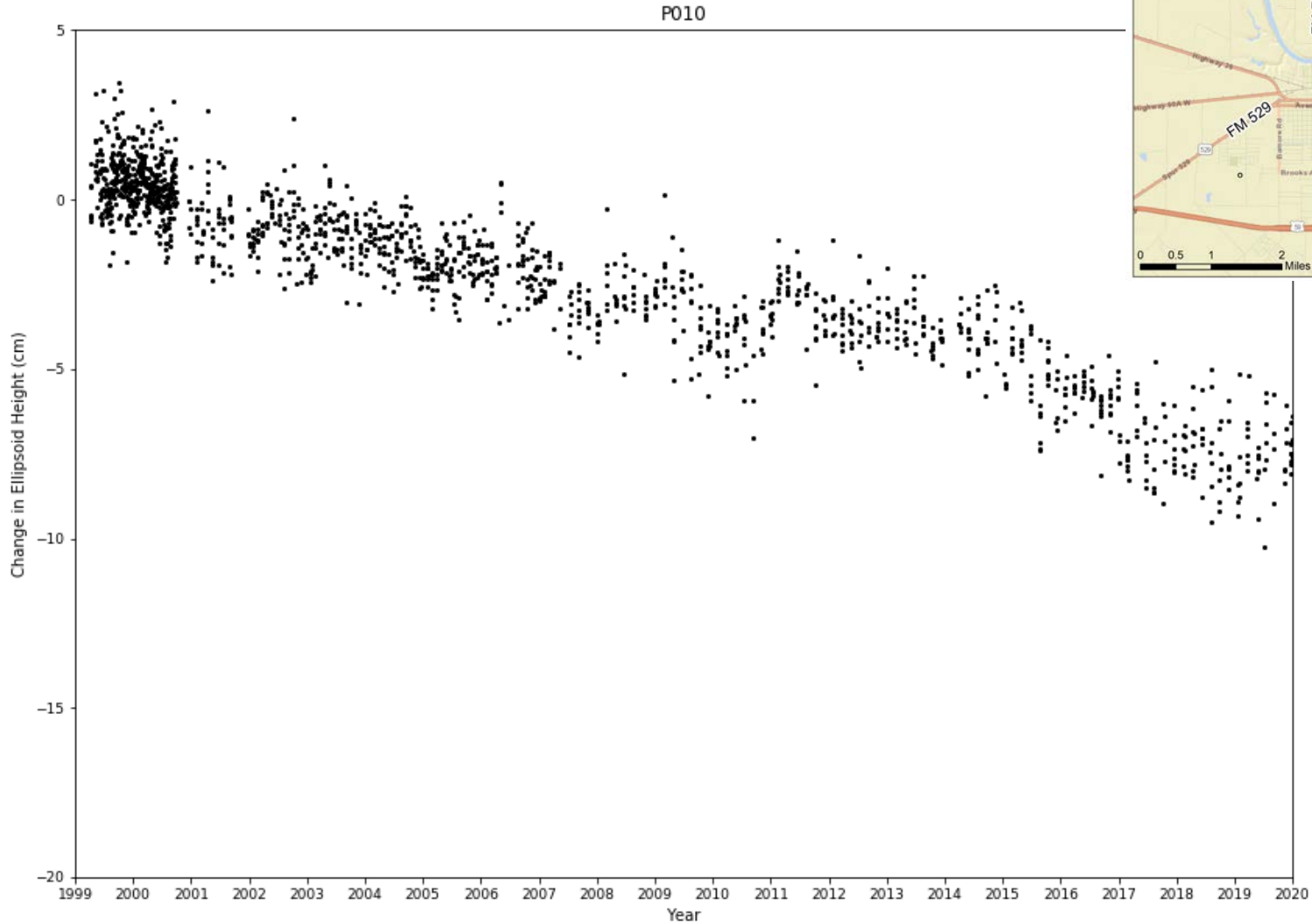


Sugar Land





Rosenberg



Fort Bend Subsidence District



2019 Annual Groundwater Report



www.fbsubsidence.org